



F.A.S.T. DISTRIBUTOR

## Electronic Throttle Control System



TRASMITEC S.A.S di Gastaldi Marco & C. - Via A. De Francisco, 127 - 10036 Settimo Torinese (TO)  
Tel. +39 011.8960020 - Fax. +39 011.8211692 - [www.trasmitec.it](http://www.trasmitec.it) - email: [info@trasmitec.it](mailto:info@trasmitec.it)

Orscheln Electronic Throttle Control Systems (ETCS) are designed with the end user in mind, to deliver a precision signal that interacts with the engine's electronic fuel management systems and to provide smooth responsive interface with the operator.

Orscheln ETCS are designed to work in a wide variety of applications from on-highway trucks and buses, off-highway agricultural and construction equipment to a wide range of specialty vehicle uses.

- Trucks
- Buses
- Vans
- Stationary Equipment
- CNG
- Hybrid
- Military
- Construction
- Agriculture



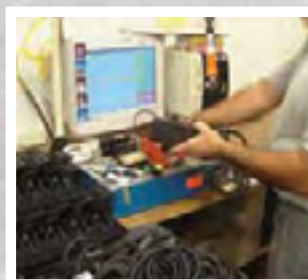
## Orscheln supports global customers

- Dedicated design and application engineering support team
- Manufacturing in North America and Europe

## Validation and durability testing include:

- FMVSS
- Electrical Sequence
- EMI
- Vibration
- Temperature Cycle
- Dust Ingress
- Humidity
- Chemical Resistance
- Water Ingress
- Salt Spray
- Handling Shock
- Endurance

100% end-of-line testing on all throttle assemblies with electronic footprint recorded.



## Sensor Technology

Orscheln ETCS are available in a wide variety of configurations to meet the customer's and end user's exact requirements. It starts with understanding the engine's electronic fuel management systems.

Orscheln works closely with customers to develop sensor technology to meet the specific application requirements. Both non-contact and contacting technology are applied.

Sensor outputs available include Ascendent, Descendent, A+D, Dual Output (A+ Half A), P.W.M., Signals+Switch.





## Floor Mounted

Floor mounted foot pedal assemblies are available in all polymer and a combination of polymer and steel materials.

- Lightweight
- Robust/Durable design
- Corrosion-resistant
- Complies with FMVSS-124
- Various pedal angles
- Various connector options and harness lengths



## Suspended

The suspended pedals are designed for ease of installation and flexibility for ergonomic positioning. Adaptable designs incorporate all polymer or polymer/steel.

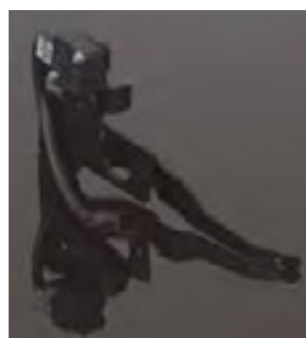
- Lightweight
- Robust/Durable design
- Corrosion-resistant
- Complies with FMVSS-124
- Fire wall mount
- Various pedal rotation angles
- Various connector options and harness lengths



## Hand Throttle

Hand throttles are designed for use with electronic engines to allow hand control of the engine.

- In-cab location
- Remote location
- Easy to operate
- Precise control of engine
- Quick shut-down feature available

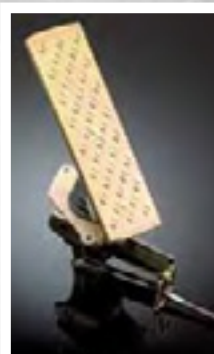
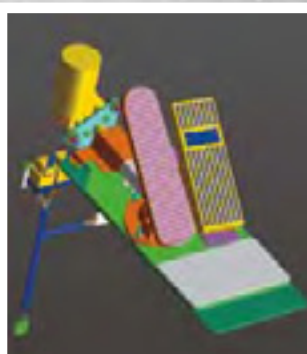


## Custom Designs

Orscheln ETCS are available in custom designs to meet the customer's ergonomic, mounting and space envelope requirements. Mechanical and electromechanical are available.

Application support can provide:

- Design
- Development
- Validation





**check » shift » accelerate » park**

## Markets

TRUCK



BUS



CONSTRUCTION



AGRICULTURE

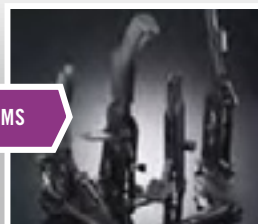


MILITARY



## Products

PARK BRAKE SYSTEMS



MECHANICAL  
CONTROL CABLES



FLUID LEVEL INDICATORS



ELECTRONIC THROTTLE  
CONTROL SYSTEMS



SHIFT CONTROL SYSTEMS



TRASMITEC S.A.S  
di Gastaldi Marco & C.  
Via A. De Francisco, 127  
10036 Settimo Torinese (TO)  
Tel. +39 011.8960020  
Fax. +39 011.8211692  
email: [info@trasmitec.it](mailto:info@trasmitec.it)  
[www.trasmitec.it](http://www.trasmitec.it)

